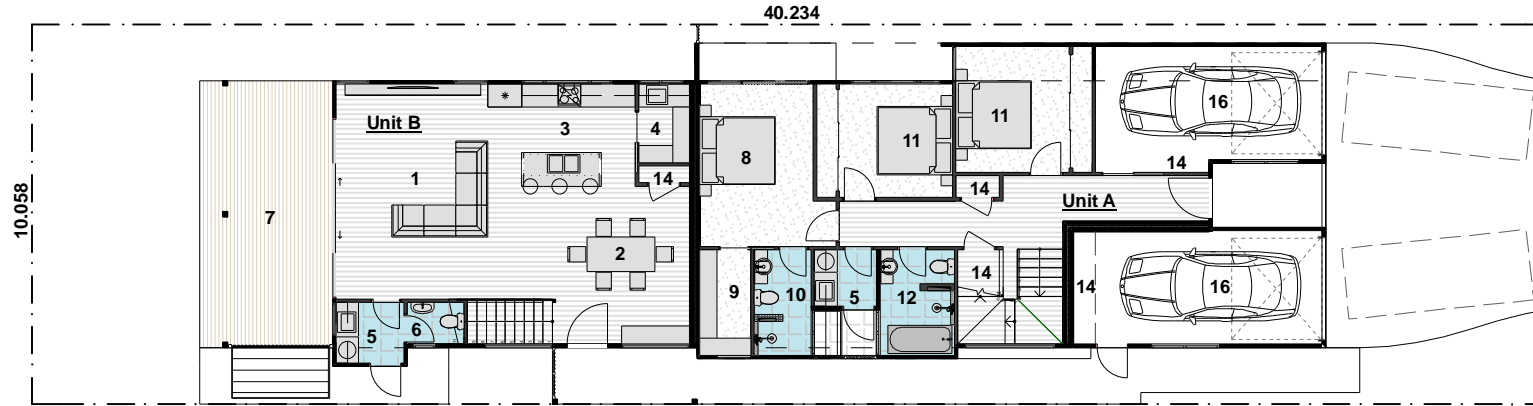


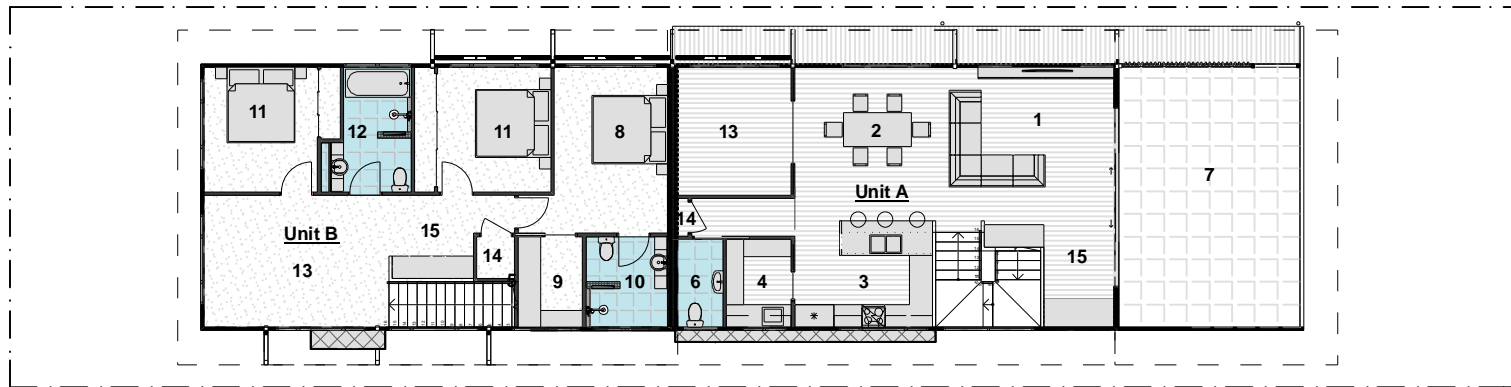
The Palm Beach



ground floor

Legend:

- 1 living
- 2 dining
- 3 kitchen
- 4 walk in Pantry
- 5 laundry
- 6 powder Room
- 7 terrace
- 8 master bedroom
- 9 walk in robe
- 10 ensuite
- 11 bedroom
- 12 bathroom
- 13 mpr
- 14 storage
- 15 study nook
- 16 garage



first floor

Site Area: 405 sqms
Site Cover: 57.7%

Unit A
 Ground Floor: 80 sqms
 First Floor: 76 sqms
Total Internal GFA: 136 sqms
 Terrace: 35 sqms
 Garage: 20 sqms
Total Area: 191 sqms

Unit B
 Ground Floor: 68 sqms
 First Floor: 83 sqms
Total Internal GFA: 151 sqms
 Terrace: 25 sqms
 Garage: 21 sqms
Total Area: 197 sqms



Quennell Sustainable Building Designs
 14 Kooyan Close, Currumbin, Qld. 4223
 m:0411323133 e: Travis@qubd.com.au
 ABN:62133602605 QBCC No:1152243



Scale 1:200 at A4
 0m 2m 4m 8m